

Germany's SAARLAND

27.11.2023



10

CENTRAL LOCATION

Germany's Saarland

The heart of Europe

Germany's Saarland offers everything to make it the perfect company location.

With its central geographical location on the border of Luxembourg and France, this is where the heart of Europe beats.



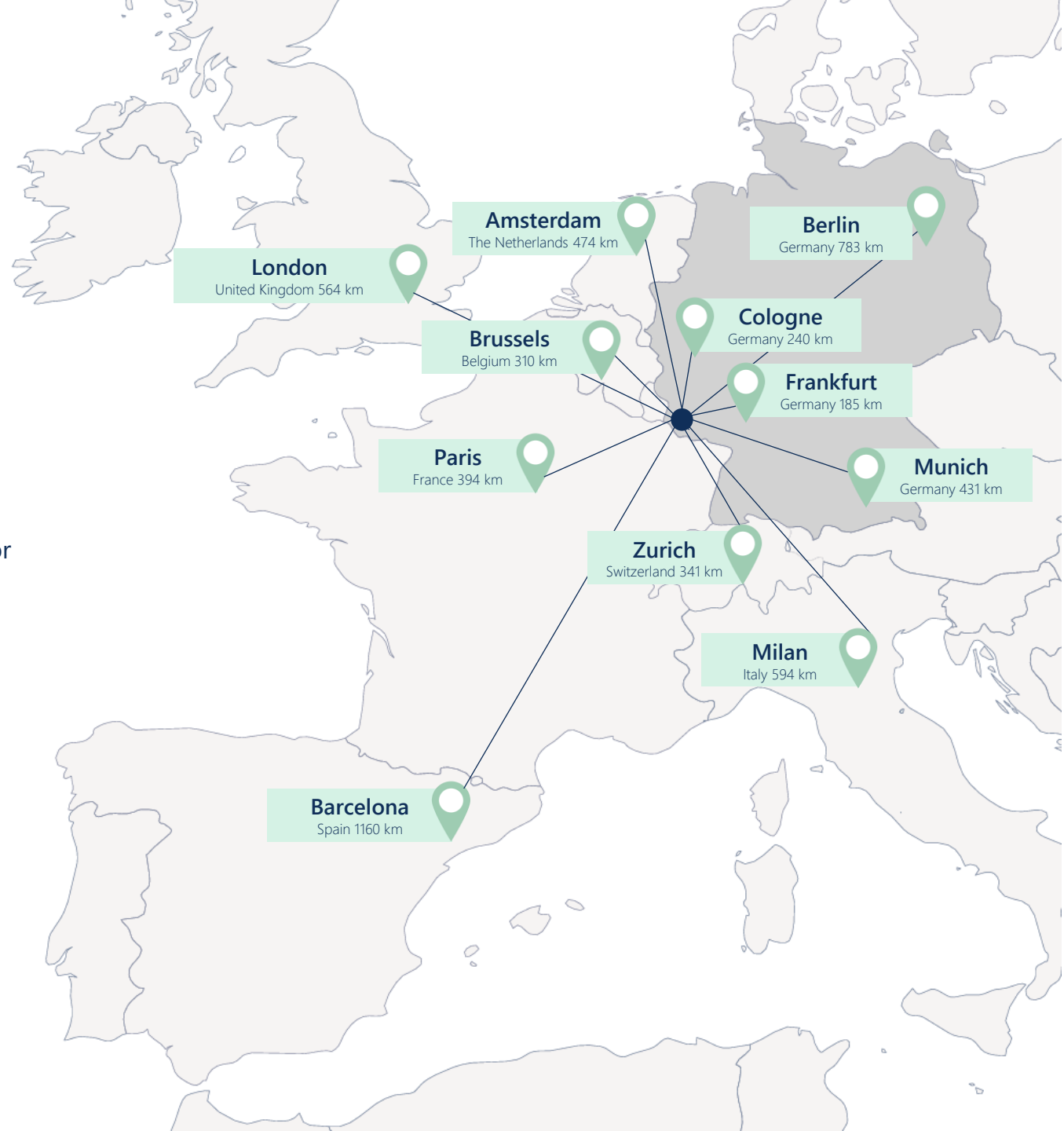
Germany's Saarland

Saarland is one of the 16 federal states of the Federal Republic of Germany. A population of one million is spread over an area of 2,600 km².



At the Center of the European Economic Area

Saarland has outstanding connections to Europe's major cities by road, rail, and air. Fast connections make it very easy for you to travel to your business appointments.



02

SPECIALISTS

The Cross-border Labor Market

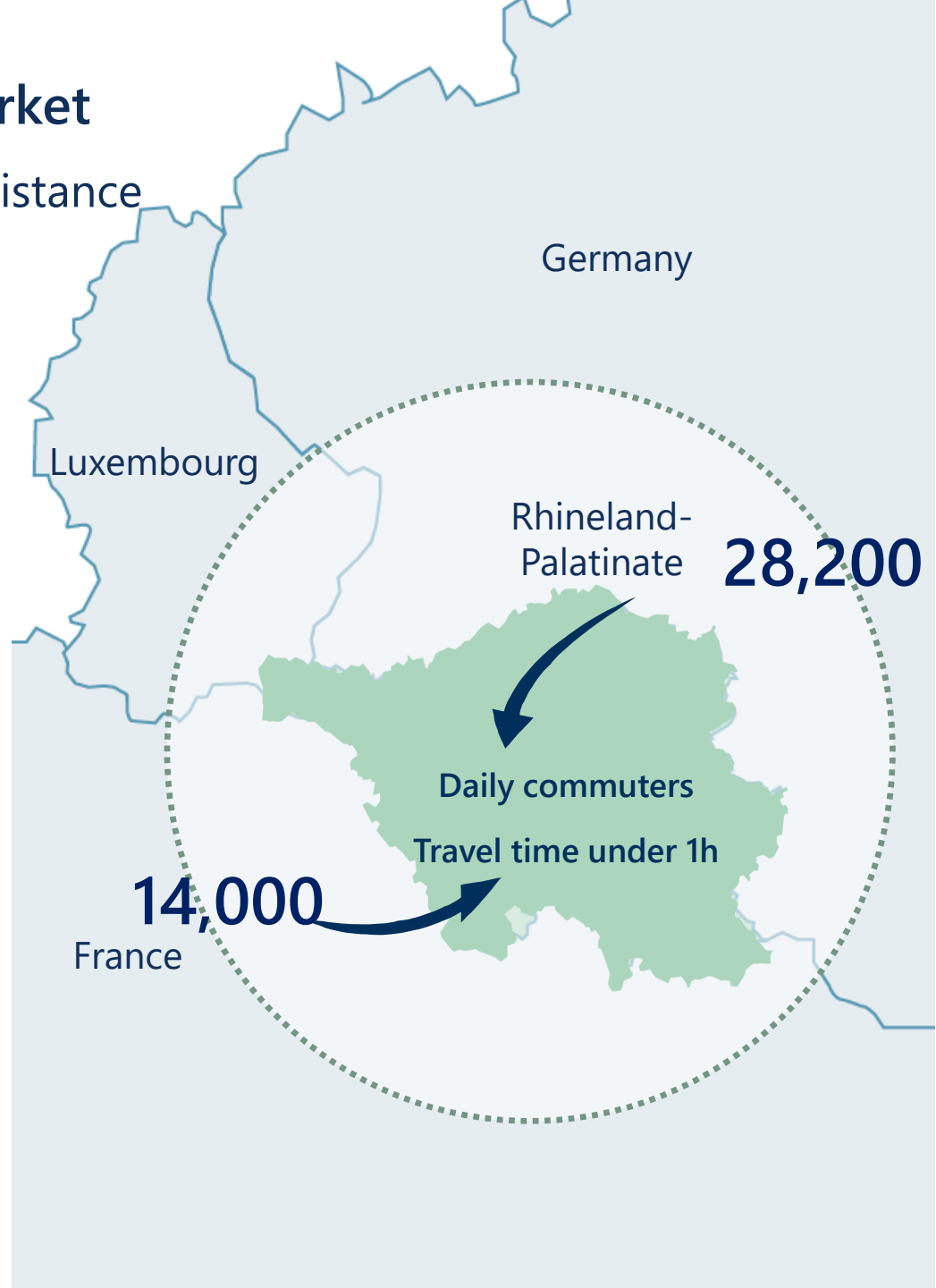
A lot of potential within a short distance

Entry without border controls across the national borders and **uncomplicated regulations** for the employment relationships of the cross-border commuters are ensured.

Despite this, most commuters come from the neighboring state of Rhineland-Palatinate, followed by those travelling from the Moselle region (France).

At present, almost 57,000 people commute to Saarland every day for work, with the majority (more than 42,000) of them coming from the immediate vicinity.

Population	2,490,000
Population of working age	1,647,000
Jobseekers	146,000
Students	66,000



Young Professionals

with practically oriented vocational training

There are currently **33,000 students and apprentices** in vocational schools in Saarland. Of these, 16,000 are apprentices who already receive practical training in a dual system in addition to school-based, theoretical training in the company. The importance of **industry at the business location Saarland** is clear from the high proportion of apprentices in this area.

Training field	
Trade and industry	58.5%
Handcraft	29.5%
Freelance professions	7.6%
Agriculture	1.9%
Civil service	1.9%
Household management	0.7%



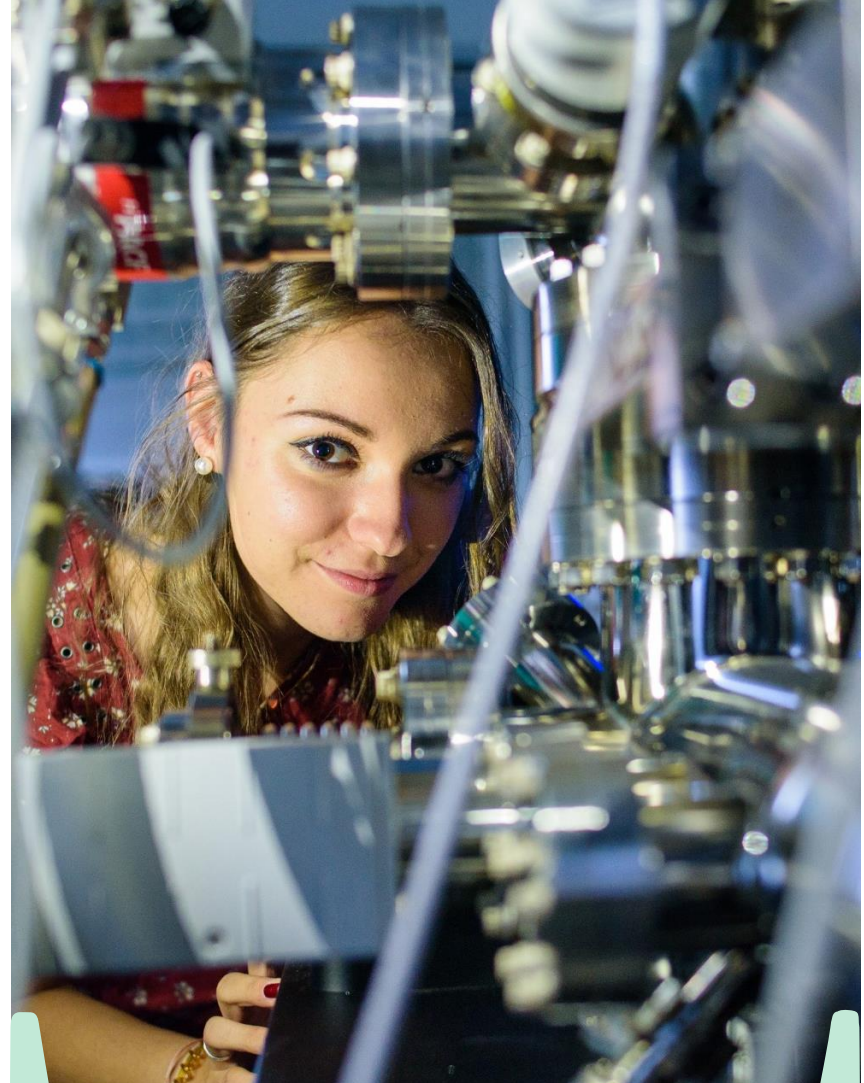
Students in Saarland

Your highly-qualified managers

Saarland is characterized by many **international degree programs**, worldwide partner universities and a high proportion of international students and academics, especially in the field of engineering and computer science. In addition to its global orientation, it's also a **location for innovation**. Furthermore, the universities of applied sciences in Germany with the highest levels of research and third-party funding are located here.

Students with degrees in:

Law, economics, social studies	43.8%
Engineering	16.3%
Human medicine, health sciences	22.2%
Math, sciences	5.1%
Other fields of study	12.5%



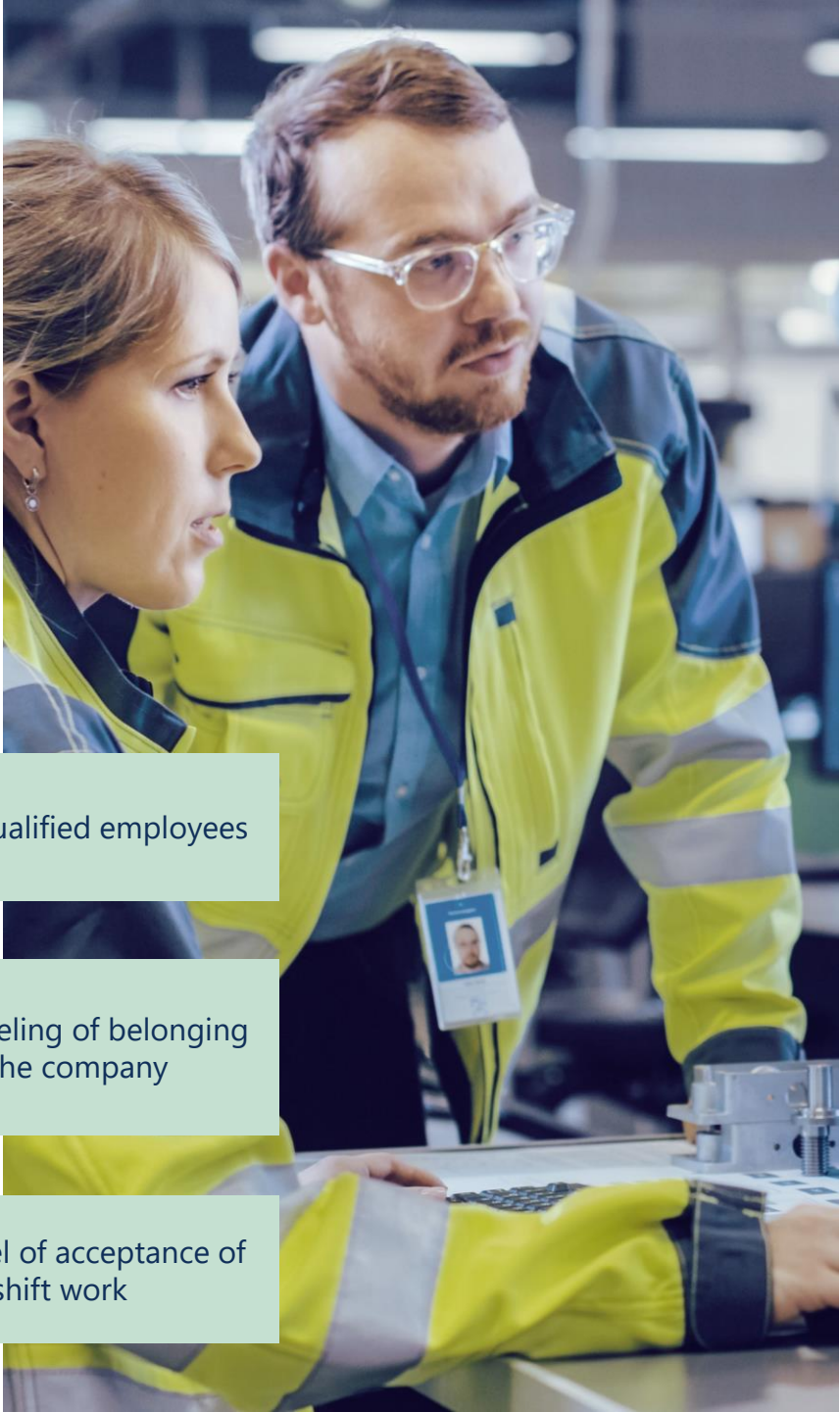
32,000 Students

6,000 Graduates per year

An Industrial Culture shapes the work ethic

The workforce in Saarland is very well-educated, motivated and loyal, and identifies strongly with the company. These attributes ensure high productivity and flexibility in companies in Saarland. Due to many years of experience in industry, acceptance of shift work is high and staff turnover low.

The wide range of training opportunities, from subsidized qualification within the company to university education at Saarland University and the University of Applied Sciences (htw saar), ensure the availability of qualified personnel in the long term.

A man and a woman in high-visibility work jackets are looking at a laptop in an industrial setting. The man is wearing glasses and has a beard. The woman is looking at the laptop screen. They are both wearing yellow and blue high-visibility jackets. The man has an ID badge around his neck.

Highly-qualified employees

Strong feeling of belonging
to the company

High level of acceptance of
shift work

30

AREAS OF COMPETENCE

AREA OF COMPETENCE

Acting in an industrial way

Producing in Saarland pays off

Local success stories



Quality steel shapes the world

Steel production in Saarland

The tradition of iron and steel production in Saarland dates back to the 15th century. Today it's primarily the steel group Dillinger that dominates the state. They are among the top names in their industry internationally and produce around 2.3 million tons of crude steel a year at the Dillingen site.

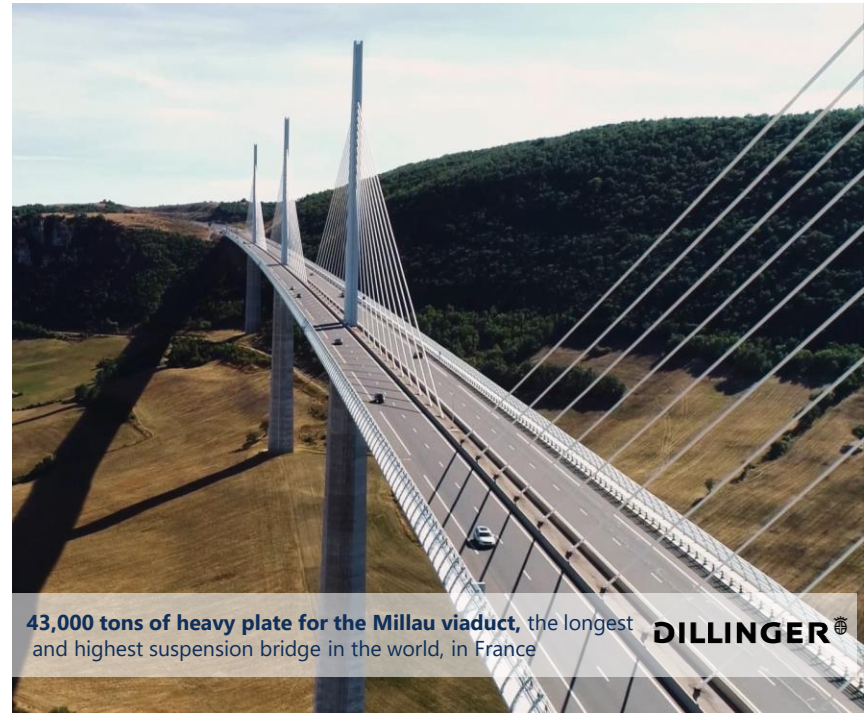
The Saarland steel industry is known for its particularly high-quality and innovative heavy plate products, which are used in a wide range of applications such as ship and bridge building.

For example, steel from Saarland reduces the weight of vehicles in the automotive industry and ensures significant reductions in fuel consumption and emissions.



Heavy plates for the hull of the Queen Mary 2, one of the biggest cruise ships in the world

DILLINGER 



43,000 tons of heavy plate for the Millau viaduct, the longest and highest suspension bridge in the world, in France

DILLINGER 

German-French Product Innovation

Electrical engineering from Saarland

The Saarland family enterprise **Hager Group** is one of the most important electrical engineering companies in the world, with a tradition stretching back more than 65 years. The company's success story, like that of Saarland, is characterized by the French-German relationship. With two initial cross-border production sites in Saarland and France, the Hager Group has grown into a global company with 23 production sites in 11 countries. The company produces a wide range of products in Saarland for residential and functional buildings, such as energy distribution and metering systems, charging systems, security technology, and door communication as well as intelligent building control systems.



AREA OF COMPETENCE
Realizing mobility

Saarland – an automotive location

A small state with great performance

With a population of one million, Saarland is one of the smallest German federal states, but it's the third largest automotive location in Germany. This speaks for the quality of the production and productivity of the workforce. In addition to the ZF plant in Saarbrücken, there are over 260 supplier companies with a total of over 40,000 employees.

Automotive suppliers based in Saarland, with production facilities for diesel injection pumps, automatic transmissions and aluminum engine blocks, are technological leaders in the field of internal combustion engines and have mastered the transition to electric and fuel cell drives and positioned their production for the future.



Driving E-mobility

Supply industry in Saarland

ZF is a global technology group and supplies systems for the mobility of passenger cars, commercial vehicles and industrial technology.

With 9,000 employees (as of today), the ZF plant at the Saarbrücken site is the largest plant in the group and is now being upgraded to become the global lead plant for e-mobility. Having previously produced advanced 8-speed automatic transmissions in ICE and HEV variants, the site is now being prepared to produce drive technology for purely electric vehicles.

The new production lines will be installed in 2023 and serial production will start in 2024. This is a logical next step in the direction of e-mobility.



Lithium-ion Batteries

Manufacturing of battery cells and modules in Saarland

SVOLT, a global high-tech company and a spin-off of the Chinese car manufacturer Great Wall Motors, develops and produces lithium-ion batteries, battery systems for electric vehicles, high-voltage storage systems (packs), battery management systems (BMS), and software solutions.

With an investment of up to two billion Euros, the company is currently building a module and pack factory as well as a state-of-the-art battery cell factory in Saarland, which will reach a production capacity of 24 GWh (300,000 to 500,000 batteries per year) in the final expansion stage.



SVOLT

AREA OF COMPETENCE
Optimizing logistics

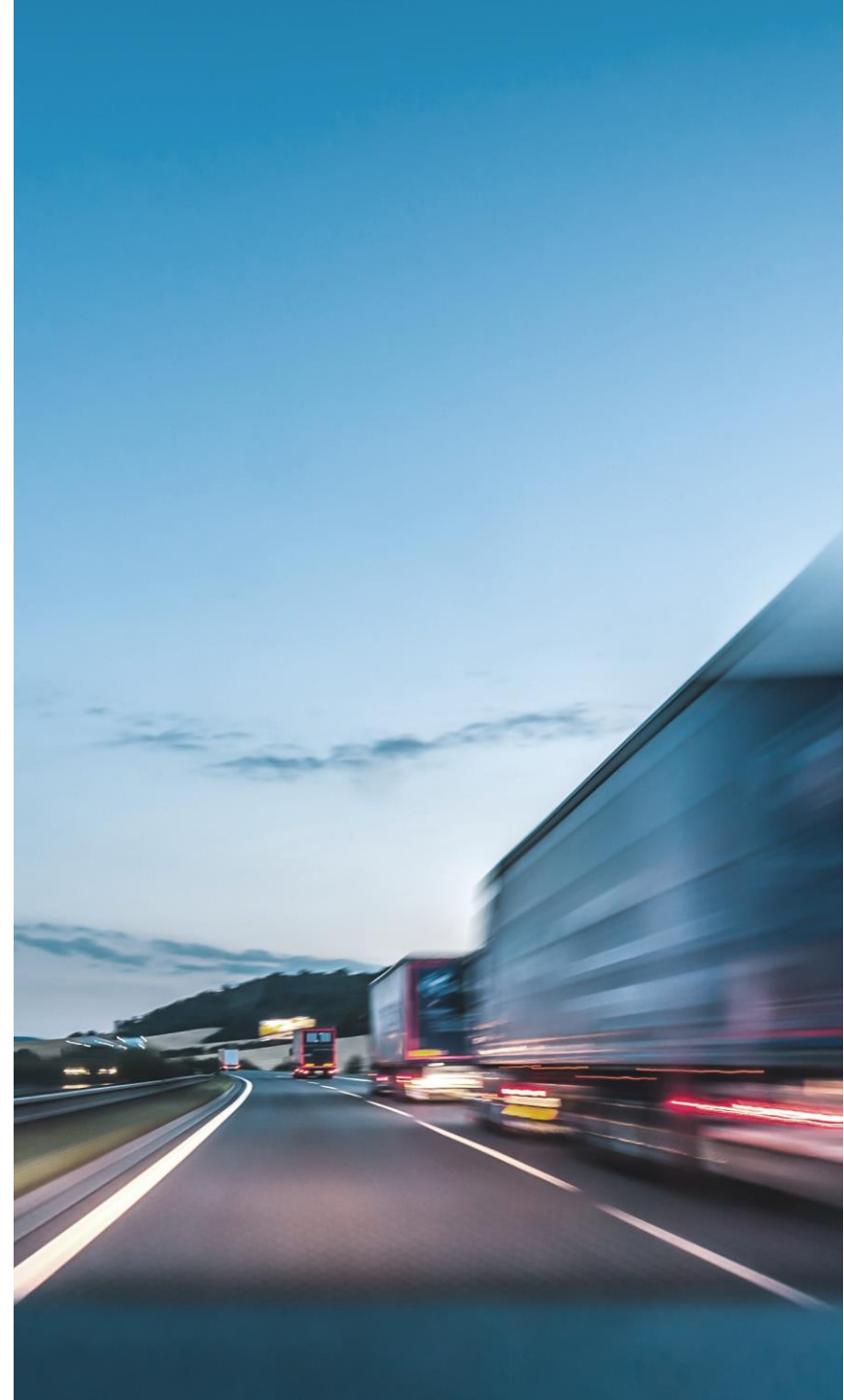
Logistics Location Saarland

Fast, efficient, reliable

Its central geographic location makes Saarland a **hub** between the economically strong conurbations of Europe. In particular it's possible to reach the markets in western and southern Europe very quickly.

This is also made possible by the excellent connections to the European road and rail network. This makes the efficient management of goods and material flows to child's play.

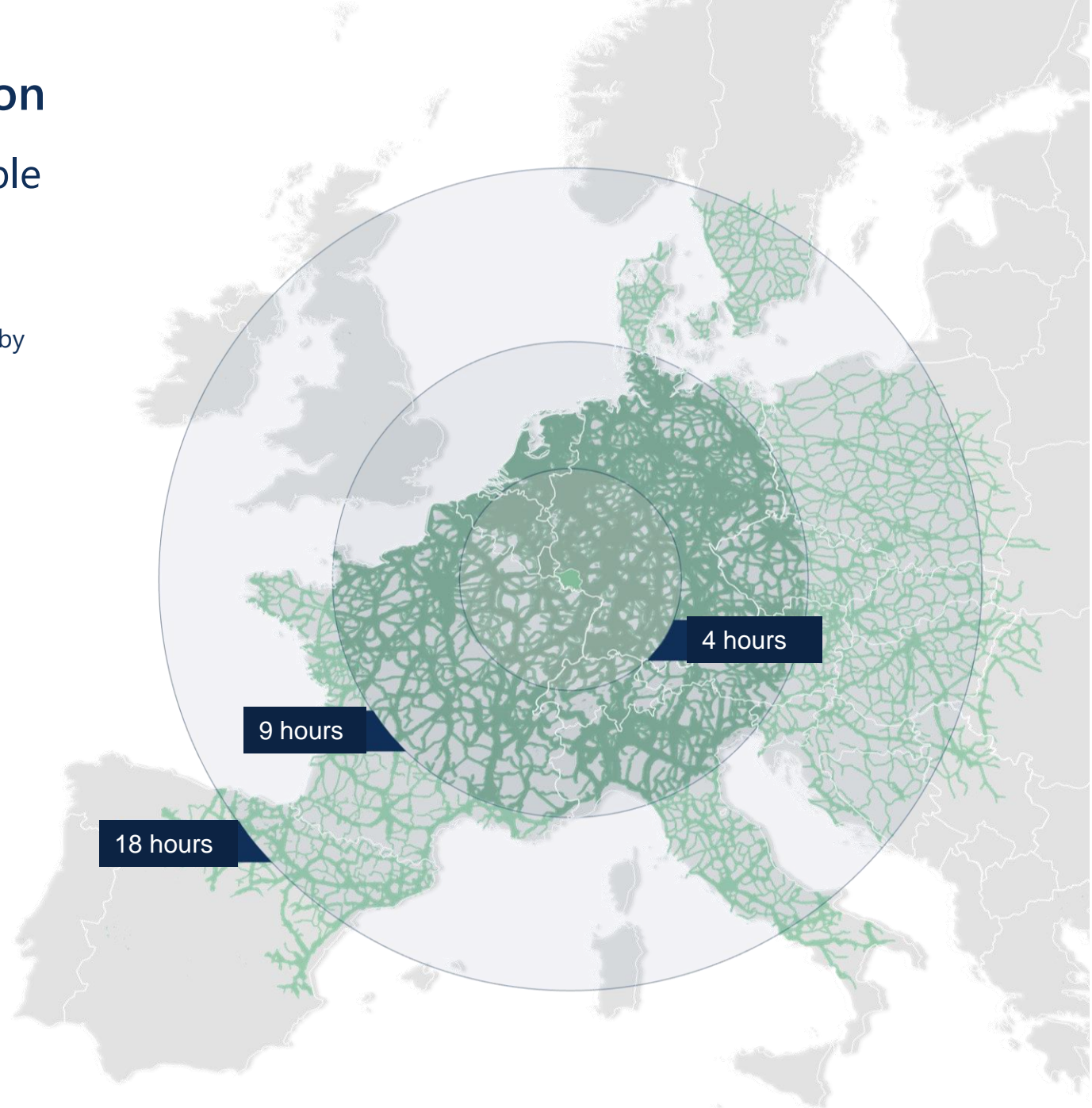
You will find reliable partners for your requirements in the well-positioned **logistics sector**, with its focus on production and industry. Even complex or special issues, for example for the transportation of dangerous goods, are covered by experienced service providers.



Logistics Location

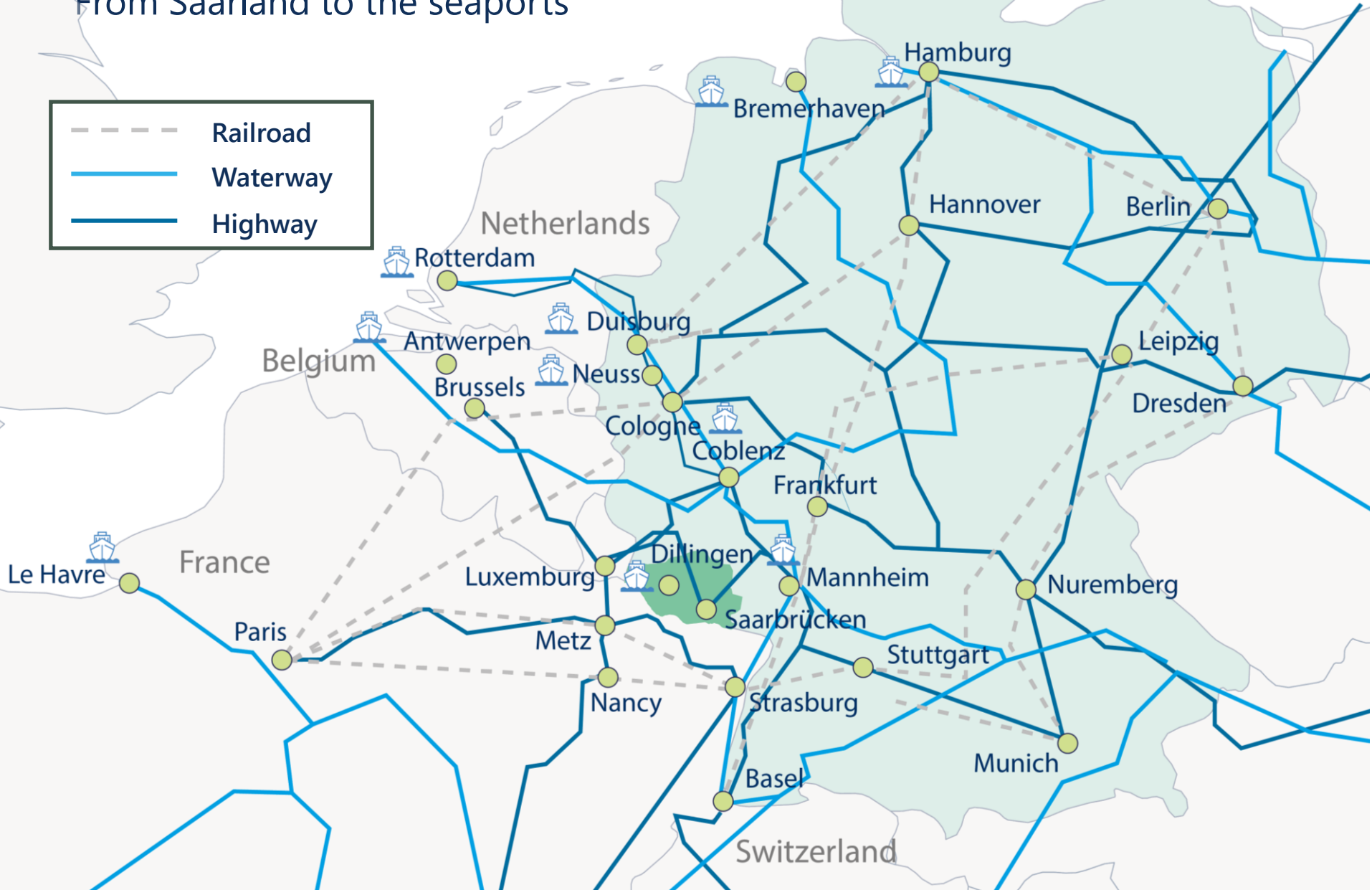
fast, efficient, reliable

You can reach most of Europe by road within 18 hours of truck driving time



Multi-modal traffic connections

From Saarland to the seaports



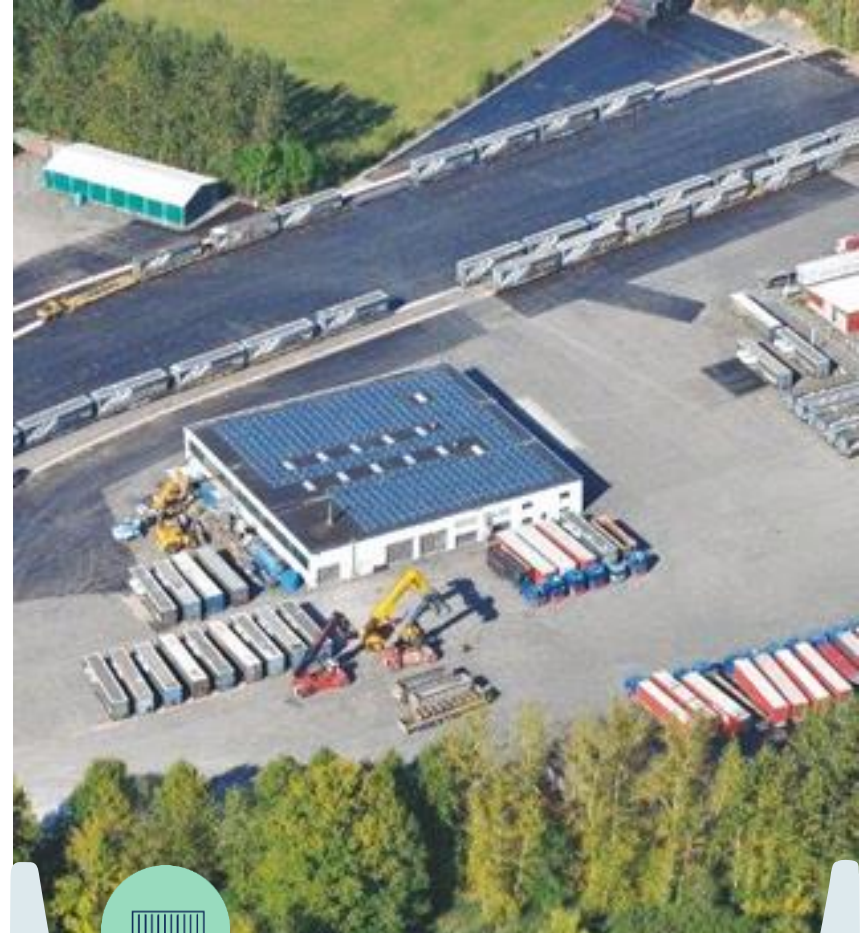
Cargo by rail

Public container terminals

The Rhine-Saar-Mosel Container Express offers fast and efficient connections from Saarland, the French border region and the Western Palatinate to the terminal in Mainz and beyond, to and from the major seaports of Rotterdam, Antwerp, Zeebrugge, and Amsterdam.

Saarland is connected to the Express via two container terminals in Beckingen and Homburg. Trains go to the connection point in Mainz three times per week at fixed times.

In addition, destinations in France, Spain and Italy can be reached from the Beckingen terminal 4 to 6 times per week – directly or in combined transport.



Cargo by rail

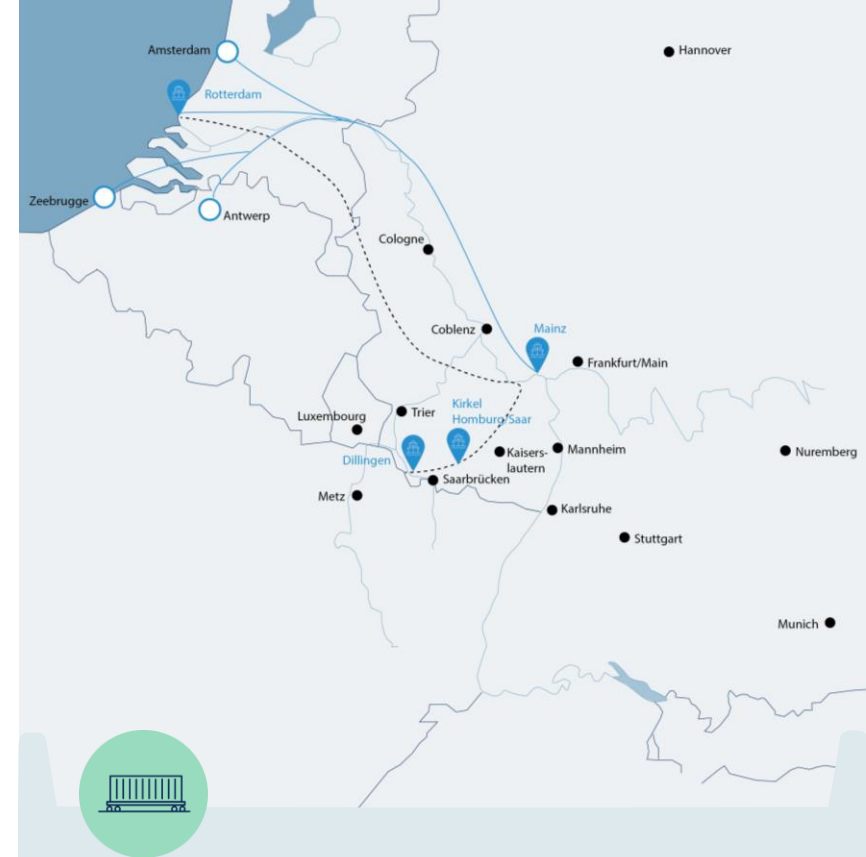
Intermodal terminal in Luxembourg

This terminal, located in the Eurohub South logistics park, offers an international marshalling yard, a logistics service provider, a customs office and a secure HGV railway station. Container handling and storage are also possible.

The terminal is connected to the north-south and east-west transport routes:

- Train passage from Bettembourg to Valencia via Saarlouis and Perpignan
- Connection to North Sea ports and to China

Fast loading and unloading from road to rail and high train frequencies are assured by the Lohr rail system.



Hub for industry

Dachser Eurohub

The hub function of Saarland and the excellent conditions for production, logistics and services have convinced the leading logistics provider **Dachser SE** of the benefits of Saarland.

The company's Eurohub has been located in Überherrn since 2002, and the site was expanded again in 2018.

The hub for European general cargo handling is connected to more than 300 Dachser locations in Europe, which are served daily. All of Europe can be reached from here in 24 to 48 hours.

With a focus on warehousing services and contract logistics, Dachser is an important service provider for the manufacturing industry and a key location factor for Saarland.



AREA OF COMPETENCE

**Research oriented towards
application**

Cutting-edge Research

Synergies through proximity

Max Planck Institute for
Software Systems (MPI-SWS)

Max Planck Institute for
Informatics (mpii)

Fraunhofer Institute for Nondestructive
Testing (IZFP)

Fraunhofer Institute for Biomedical
Engineering (IBMT)

Leibniz Institute for New
Materials (INM)

German Research Center for
Artificial Intelligence (DFKI)

Korea Institute of Science and
Technology (KIST)

Schloss Dagstuhl – Leibniz
Center for Informatics

Steinbeis Research Center Material
Engineering Center Saarland (MECS)

Helmholtz Institute for Pharmaceutical
Research Saarbrücken (HIPS)

Helmholtz Center for Information
Security (CISPA)

Intel Visual
Computing Institute



University of Applied Sciences

At Saarland University of Applied Sciences (htw saar) in Saarbrücken more than 6,000 students are registered at the faculties for Business, Architecture and Civil Engineering, Engineering and Social Sciences.

The degree courses at htw saar combine practical skills with a strong theoretical foundation. It is one of the leading application-oriented universities in Germany. The students benefit from modern infrastructure, for example like the Embedded Robotics Lab. Htw saar is also characterized by its particularly close relationship with business.



Application-oriented Research

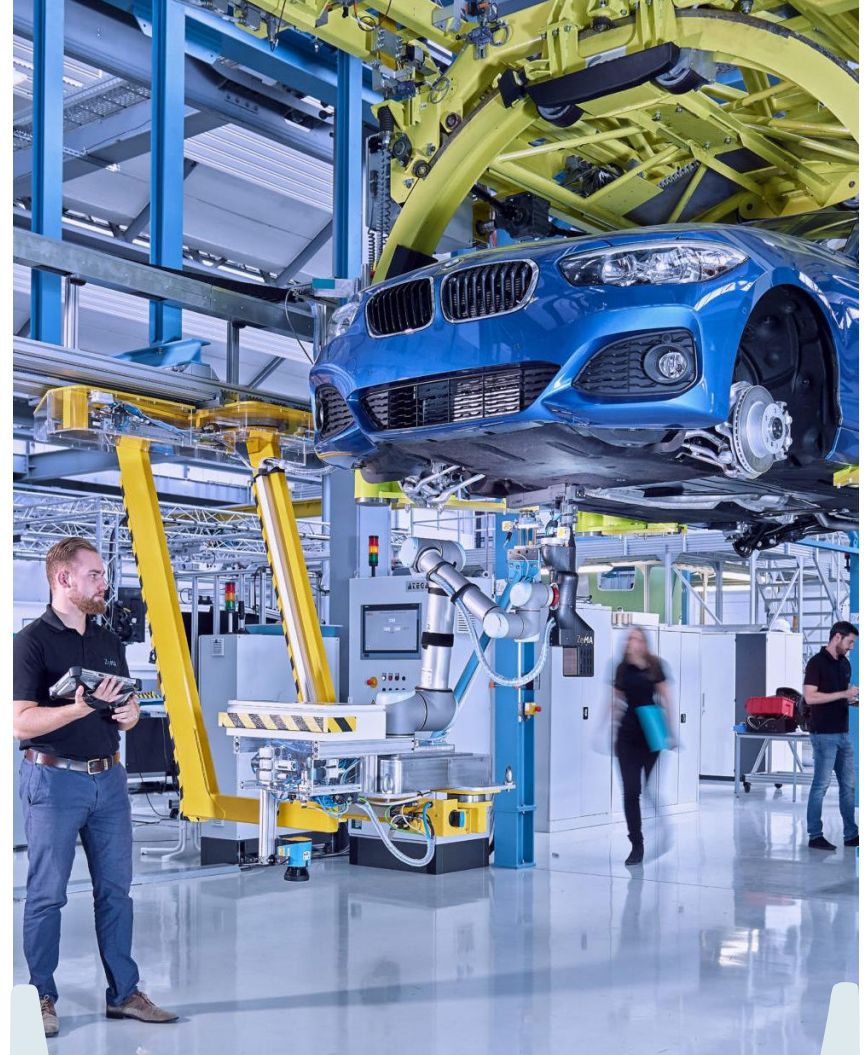
ZeMA – Center for Mechatronics and Automation Technology

ZeMA sees itself as a development partner with close ties to industry, with the aim of industrializing and transferring the technology of research and development results.

Development activities take place in close cooperation with institutes and chairs of Saarland University and the University for Applied Sciences.

Professors in the relevant fields, especially mechatronics, supervise the highly qualified scientific staff working at the research center.

This ensures that scientific potential, specific know-how and the latest research results flow synergistically and sustainably into the work of ZeMA.



04

OUR SERVICE

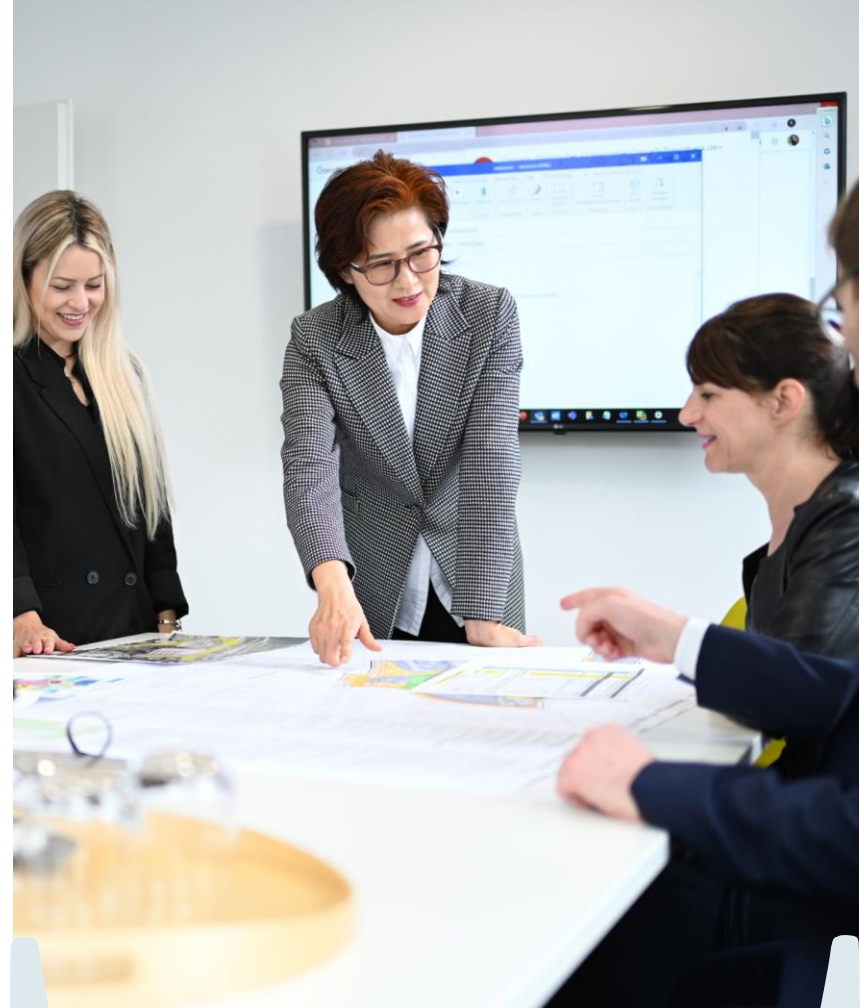
We are your partner for realization

More than just brochures

Our roots lie in the real estate business. The development and realization of real estate solutions for our customers has always been at the heart of our work.

Whether you need office premises, land or an industrial hall - we are your partner for the realization.

From the first point of contact, we offer you comprehensive support. Our all-round service ranges from the first consultation to the turnkey construction of your dream property and beyond.



Our Support for you

Products and services

Benefit from our many years of experience in the implementation of large development and construction projects!

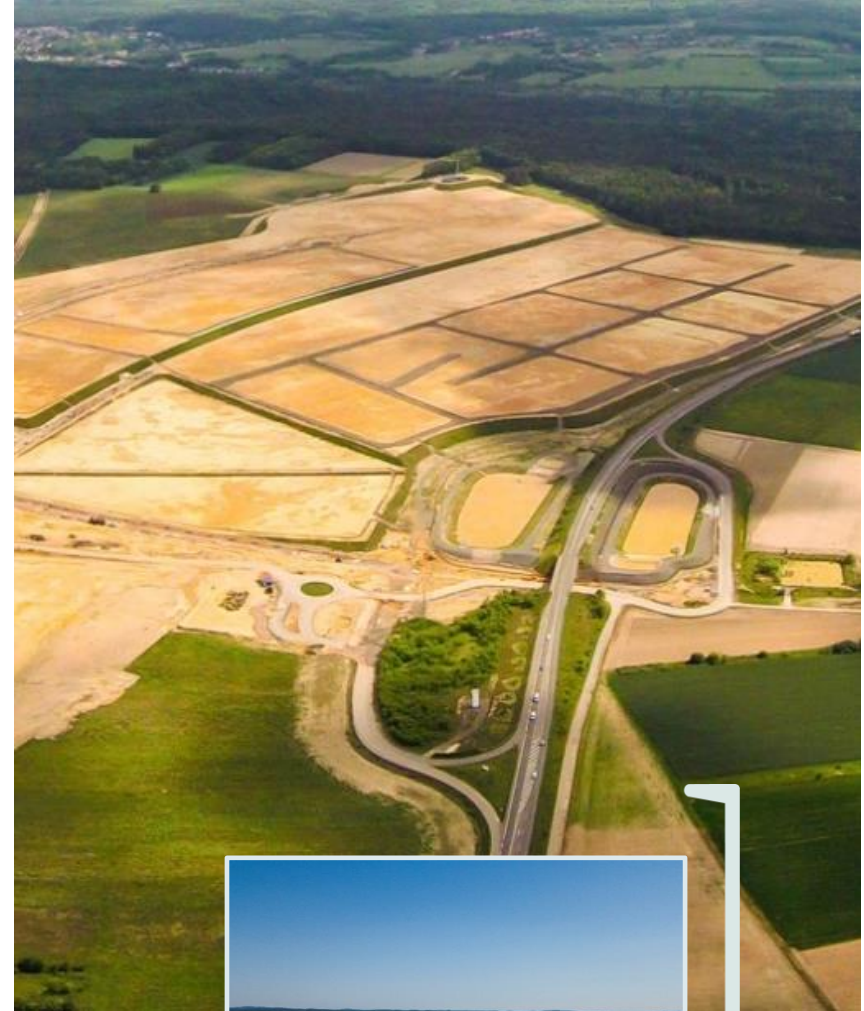
- Specification-based development of industrial sites and buildings
- Provision of location information tailored to the project
- Support in applying for subsidies and permits
- Mediation of partners for tax and legal questions when setting up your company
- HR support from recruiting to qualification
- Contacts with companies, research institutions, and other networks
- Accommodation for your staff, kindergartens, and schools, and language courses



Sites & Real Estate

We know Saarland like the back of our hand

Saarland has a lot to offer investors. And we know Saarland like the back of our hand. Decades of experience with construction and development projects, regularly implemented qualitative and quantitative surveys and constant networking have given us a uniquely comprehensive overview of the market for sites and commercial real estate in Saarland. Brownfields and potential sites included.



REFERENCES

Reference

Nobilia – construction of a production facility for the French market

The German family enterprise nobilia, Europe's largest producer of fitted kitchens, can look back on more than 75 years of company history. In the future up to 1,600 fitted kitchens are to be produced daily at the Saarland plant. Each one of them is unique, individually planned and manufactured with the utmost precision. A modern production facility with a high degree of automation and well-trained specialists guarantees a consistently high level of quality. Thanks to its central location and good connections to the European road network, nobilia can supply the French and southern European markets from Saarland.

- Investment: 200 million Euros
- Site: 29 ha
- Workplaces: 1,000

Our contribution:

- **Specification-based search for commercial sites**
- **Sale of a suitable commercial site**
- **Support in the recruitment of staff**
- **Support when applying for funding**



nobilia[®]

“When we were looking for a location to expand, Saarland offered the ideal conditions: good transport connections, a qualified workforce and an ideally prepared site.

The efficient services of the local authorities has made planning and approval procedures easy for us and ensured the timely construction of our production facility. Jürgen Barke, Thomas Schuck and their respective teams supported us throughout the process and beyond.”

Dr. Lars M. Bopf

Chairman of the Management Board of nobilia Werke J. Stickling GmbH & Co. KG

Reference

Wolfspeed – construction of the world's largest and most modern semiconductor factory in Saarland

The US company Wolfspeed is a pioneer and market leader in the development and production of semiconductors made of silicon carbide (SiC chips).

SiC semiconductors are small, powerful and efficient. They take performance electronics in batteries and sensors to a new level and thus significantly support the breakthrough of electromobility and digitization in industry.

The company headquarters are located in Durham, North Carolina. For the European capacity expansion, Wolfspeed will build the world's largest, most modern plant for silicon carbide semiconductors in Saarland on a former power plant site in Ensdorf.

- Investment: 2.5 billion Euros
- Site: 18 ha
- Workplaces: 600

Our contribution:

- **Specification-based search for commercial sites**
- **Concept for infrastructure development**
- **Support in the approvals process**
- **Development of the commercial site**
- **Long-term leasing of the commercial site**



"In our global search for a location for this new factory, we simply fell in love with Saarland. We want to build a bridge here at this site, a former coal-fired power plant that is a reminder of the industrial past. A bridge to a better, cleaner industrial future. [...] We are impressed by the support, energy and enthusiasm of the German federal government and the Saarland state government. And we are confident that the talented people here in Saarland will help us build and operate a world-class semiconductor factory."

Gregg Lowe
CEO Wolfspeed

Germany's SAARLAND



Thomas Schuck

CEO

gwSaar Gesellschaft für Wirtschaftsförderung Saar mbH
Saarland Economic Promotion Corporation

Phone: +49 6893 9899- 200

Mail: t.schuck@invest-in-saarland.com

Web: www.germanys.saarland

Germany's SAARLAND



gwSaar Gesellschaft für Wirtschaftsförderung Saar mbH
Saarland Economic Promotion Corporation

Phone: +49 6893 9899-

Mail:

Web: www.germanys.saarland