

# Saarland as an IT Location

Others made history, we make the future!



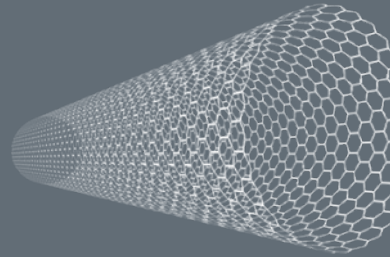
# STRONG INDUSTRIES ON COURSE FOR GROWTH

Everything is pointing towards success: be it the location, infrastructure, real estate value and availability of land, qualified staff or political support: investors find optimum conditions in Saarland.

No wonder that industry and future sectors grow successfully with us.

Saarland is the third-largest automotive location in Germany, one of the best research locations for IT in Europe and a forerunner in nanotechnology.

Nano-  
technology



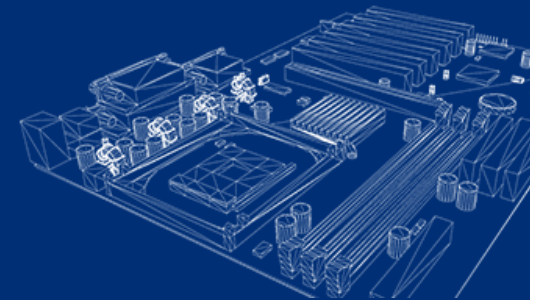
Medical technology



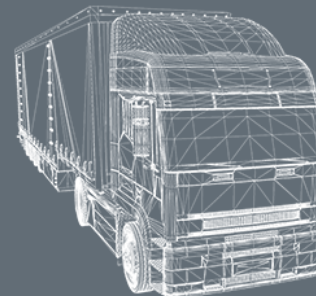
Call centre



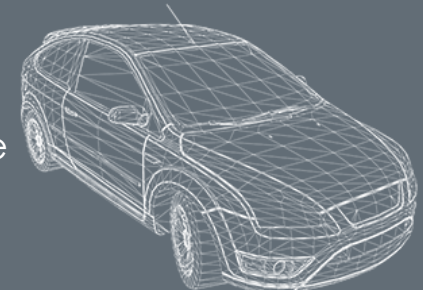
IT



Logistics



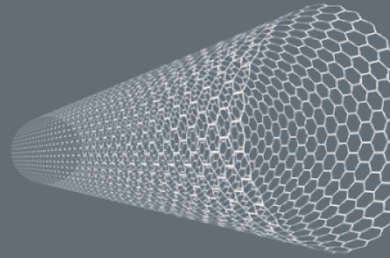
Automotive



# STRONG INDUSTRIES ON COURSE FOR GROWTH



Nano-  
technology



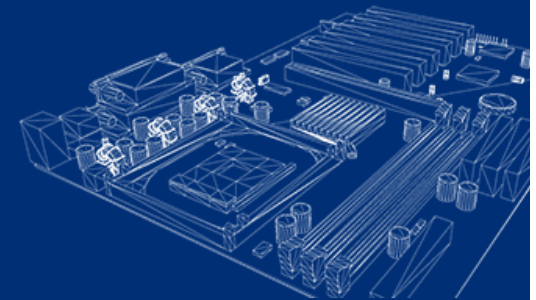
Medical technology



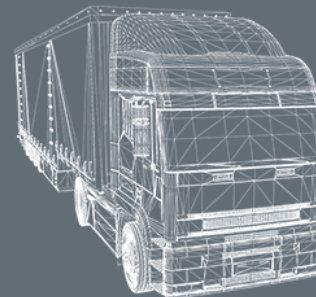
Call centre



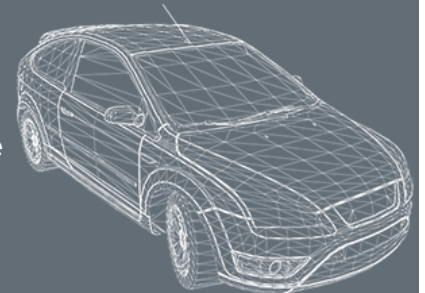
IT



Logistics



Automotive





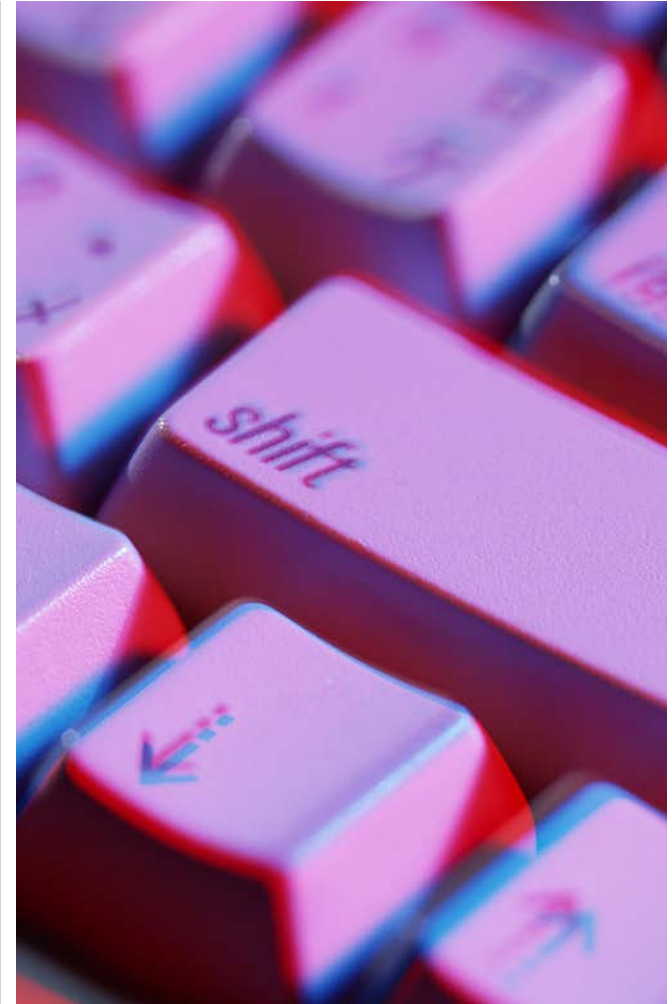
# IT IN SAARLAND

The breadth of IT competence in Saarland ranges from innovations for trade through to safety for companies and private persons on the net.

Renowned institutes, such as the computer science of the Max-Planck Institute or the German research centre for artificial intelligence have chosen this location as well as approximately 350 IT companies.

They characterise one of the largest IT clusters in Europe together with Saarland University.

The approximately 10,000 employees in the sector in research and industry influence international IT developments with their innovations.



# IT IN SAARLAND

## RENOWNED INSTITUTES | SUCCESSFUL COMPANIES



### Research focuses for computer science in Saarland:

- Algorithms
- Bio-informatics
- Databases and information systems
- IT-security
- Artificial intelligence
- Interaction between man and machine
- Programme verification
- Software systems
- Software engineering
- Visual computing

# COMPUTER SCIENCE RESEARCH IN SAARLAND

- 1969 establishment of Saarbrücker Informatik
- 8 globally renowned computer science institutes
- 1,700 students from 31 nations
- 500 scientists
- A unique computer science research location in Europe
- Intensive student and young scientist programmes, providing an early insight into research
- Support for the scientist using state and university facilities



# THE SAARBRÜCKEN COMPUTER SCIENCE CAMPUS



**Informatik Saarland:** ① Fachbereich Informatik (seit 1969), ② Deutsches Forschungszentrum für Künstliche Intelligenz (seit 1988), ③ Max-Planck-Institut für Informatik (seit 1990), ④ Zentrum für Bioinformatik (seit 2001), ⑤ Max-Planck-Institut für Softwaresysteme (seit 2004), ⑥ Informatik Exzellenzcluster (seit 2007), ⑦ Saarbrücken Graduate School of Computer Science (seit 2007), ⑧ Intel Visual Computing Institute (seit 2009), ⑨ Center for IT-Security, Privacy and Accountability (seit 2011). ⑩ Rund 50 km entfernt: Leibnizzentrum Schloss Dagstuhl (seit 1989). Außerdem: ⑪ Fachbereich Mathematik, ⑫ Bibliothek, ⑬ Günter-Hotz-Hörsaal

[www.informatik-saarland.de](http://www.informatik-saarland.de)



# UNIQUE FOR COMPUTER SCIENCE EXCELLENCE

**Excellent research and outstanding teaching are closely connected in Saarbrücken.**

The excellence initiative of the federal government and the states has recognised this. In a unique case within Germany it is supporting the computer science excellence cluster and the graduate school in Saarland. The latter already has 390 PhD candidates, 320 of whom are in the classic dissertation phase and approximately 70 in the preparation phase.



**One of the three German competence centres for IT security is also located at this computer science stronghold on the Saarbrücken Campus.**

The CISPA – Centre for IT Security, Privacy and Accountability develops, among other things, strategies for protection from attacks from the Internet. The excellent training and research structure guarantees highly qualified young IT specialists.



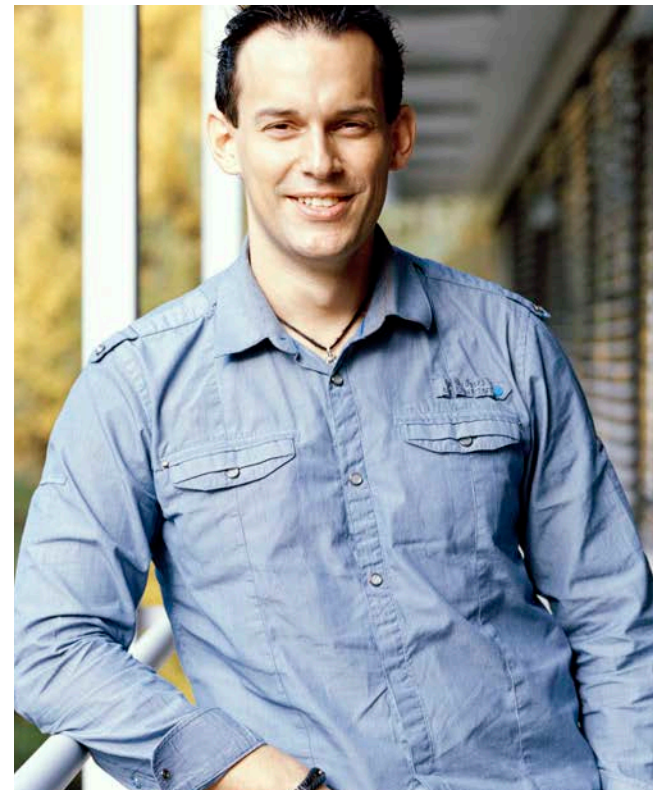
# THREE SAARLAND SPECIALISTS NAMED AS TOP IT MOVERS AND SHAKERS BY 'COMPUTERWOCHE' MAGAZINE



**PROF. AUGUST-WILHELM SCHEER**  
**FOUNDER OF IDS SCHEER**



**PROF. WOLFGANG WAHLSTER**  
**DFKI**



**PROF. MICHAEL BACKES**  
**SAARLAND UNIVERSITY**

# INNOVATION FROM SAARLAND



## IT and retail:

### **Innovative retail laboratory – retail innovations**

Application-oriented research cooperation by DFKI and Globus SB-Warenhaus Holding. From personalised sales advice and 'speaking products' through to the intelligent shopping basket.

[www.innovative-retail.de](http://www.innovative-retail.de)

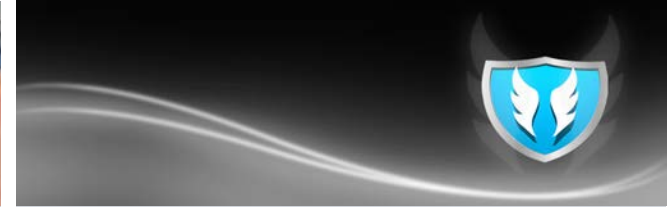


## IT and traffic:

### **Safe software for the world's largest passenger plan:**

The software tool 'aiT Worst-Case Execution Time Analyzer' by the Saarbrücken company AbsInt can guarantee that the flight control system of the Airbus A380 works in all circumstances within the give time limits.

[www.absint.com](http://www.absint.com)



## IT and communication:

### **Anti-spying app protects personal data**

Appguard protects personal data on smartphones and tablet-PCs. Users can monitor their apps and remove permission for access to data at any time.

[www.backes-srt.com](http://www.backes-srt.com)

# INNOVATION FROM SAARLAND



IT AND RETAIL



IT AND TRAFFIC



IT AND COMMUNICATION



# INNOVATIONS FROM SAARLAND

## IT and retail:

### **Innovative Retail Laboratory – Innovation for retail**

- Application-oriented research cooperation between DFKI and Globus SB-Warenhaus Holding
- Development of an intelligent shopping advisor and new forms of interaction with the customer
- From personalised sales advice to 'speaking' products through to an intelligent shopping basket
- A unique infrastructure for intelligent shopping environments on 500 m²

[www.innovative-retail.de](http://www.innovative-retail.de)

## IT and traffic:

### **Secure software for the world's largest passenger plane:**

- The software tool 'aiT Worst-Case Execution Time Analyzer' by the Saarbrücken company AbsInt can guarantee that the flight control system of the Airbus A380 works in all circumstances within the give time limits.
- aiT allows the calculation of runtime limits for all tasks in the system
- The first tool in the world that can automatically ensure the correct time response for software in complex embedded systems

[www.absint.com](http://www.absint.com)

## IT and communication:

### **Anti-spying app protects personal data**

- The app protects user data on smartphones and tablet PCs
- Users can monitor their apps and remove permission for access to data at any time.
- The app shows which personal data is protected
- More than one million people have already downloaded this mini-programme

[www.backes-srt.com](http://www.backes-srt.com)

# SCIENCE PARK SAAR – AN INCUBATOR FOR SMALL COMPANIES



Saarland offers young IT companies optimum conditions for each development step. Besides the starter centre at Saarland University the Science Park Saar, in the immediate vicinity of the University, also offers an excellent infrastructure for young companies.

## Facts SPS:

Companies: 41

Employees: approx. 580

Office areas: 7,300 m<sup>2</sup>

Laboratory areas: approx. 2,000 m<sup>2</sup>

Warehouse: 970 m<sup>2</sup>

Specialist rooms: 145 m<sup>2</sup>

# WEBMATE MAKES TESTING IN WEB 2.0 COST-EFFECTIVE



A unique tool worldwide – WebMate is currently the only tool in the world that fully and fully automatically tests for the cross browser compatibility of Web 2.0 applications. WebMate is a direct result of top level research at the faculty for software technology under Prof. Dr. Andreas Zeller in Saarbrücken.

[www.testfabrik.com](http://www.testfabrik.com)



# THE MAX PLANCK INSTITUTE SIMPLIFIES MOTION CAPTURING



The simplified tracking process by MPI allows any kind of movement to be recorded and then converted into a computer-readable format that can analyse, record and process the movements and use them to control applications.

“Medicine could profit from that. This makes it much easier for doctors illustrate successful healing following operations on joints”, says Nils Hasler of the Max Planck Institute for Computer Science in Saarbrücken.

[www.mpg.de/155640/  
softwareysteme\\_saarbruecken](http://www.mpg.de/155640/softwareysteme_saarbruecken)

# CONTACT

**gwSaar**

**Gesellschaft für Wirtschaftsförderung Saar mbH**

ATRIUM Haus der Wirtschaftsförderung  
Franz-Josef-Röder-Strasse 17  
D-66119 Saarbrücken

Tel: +49-681-9965-400

Fax: +49-681-9965-444

E-mail: [info@invest-in-saarland.com](mailto:info@invest-in-saarland.com)

Internet: [www.invest-in-saarland.com](http://www.invest-in-saarland.com)

**Your contact at gwSaar**

**Dieter Conzelmann**

+49-681-9965-454

[conzelmann@invest-in-saarland.com](mailto:conzelmann@invest-in-saarland.com)

